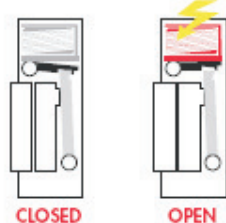




# O&C ZÁRAK

## Aszimmetrikus Elektromos ajtózár

### OPTION 1 ASYMMETRICAL



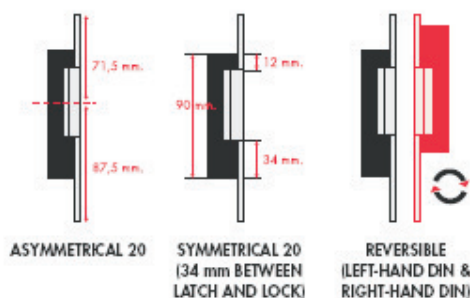
LEFT-HAND DIN ▶  
RIGHT-HAND DIN ▶

20	?	!	
10	?	!	

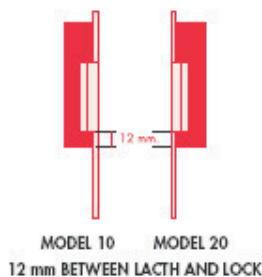
Create the reference yourself with the help of the **LOCKSMITH STORE** [www.openerndoors.com](http://www.openerndoors.com)

### REVERSIBILITY

#### ASYMMETRICAL REVERSIBILITY USING MODEL 20



#### SYMMETRICAL REVERSIBILITY USING MODEL 10 AND 20



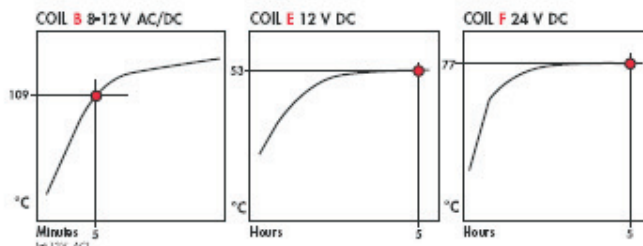
### COIL MODELS

Warning:

When installing door releases with DC connections, the lock latch should not exert any pressure on the door-release latch. Incorrect installation could cause door-release failure.

- B** 8/12V ≈ 12 Ω (0,7A at 12Vdc)
- C** 12V ~ 30 Ω (0,25A)
- D** 24V ≈ 100 Ω (0,15A at 24Vdc)
- E** 12V = 60 Ω (0,20A)
- F** 24V = 220 Ω (0,12A)

Temperature test:  
Measured on coil surface



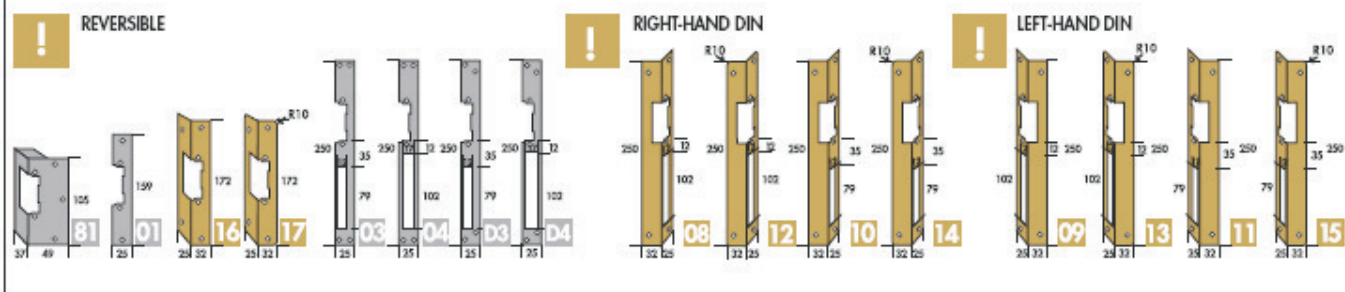
### LATCH MODELS



### FACEPLATE COLOURS

- WHITE
- GREY
- BLACK
- BROWN

### FACEPLATE & SURFACE BOX MODELS



Ha termékeinkkel kapcsolatban további információkra van szüksége, kérjük keresse cégünket az alábbi elérhetőségeken.



Cím: EUROPROX Bt.  
H-8000, Székesfehérvár  
Turóci utca 28/A.  
Telefon: (+36) (22) 300-528  
Mobil: (+36) (20) 439-4652  
E-mail: info@europrox.hu  
WEB: www.europrox.hu